

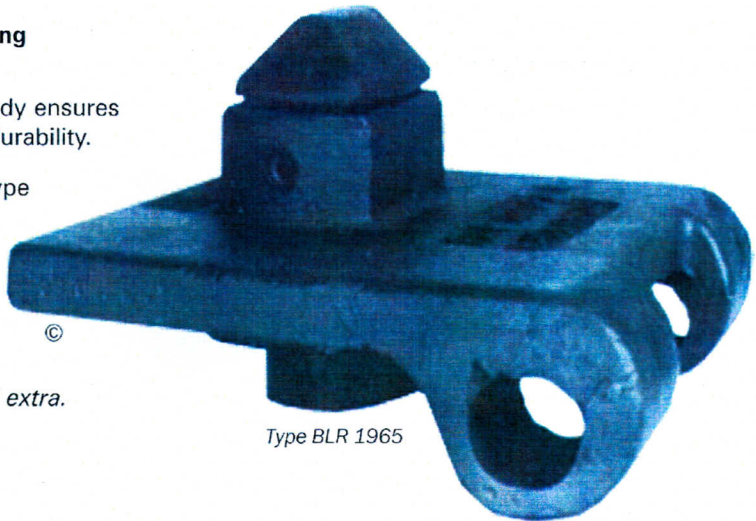
## RAIL WAGON TWISTLOCK Type BLR 1965

These products are made from special steel designed for low temperature working at -40°C as standard.

- Designed to secure ISO, special containers and Swap Bodies to rail wagons
- Accepted by British Rail

**Offers the use the following important advantages:**

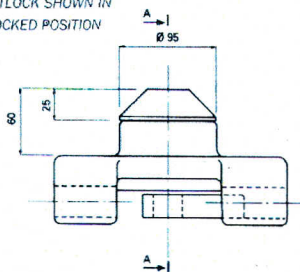
- Weldable cast steel body ensures rugged strength and durability.
- Interchangeable UIC type design incorporating 'Twistlock' features.
- Hinges back when not in use.



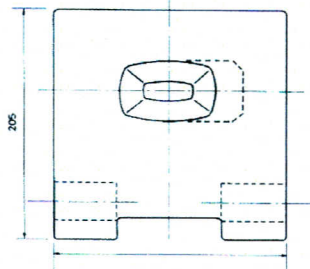
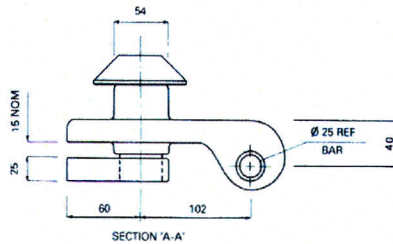
Type BLR 1965

*Operating handle optional extra.*

TWISTLOCK SHOWN IN UNLOCKED POSITION



TWISTLOCK SHOWN IN LOCKED POSITION



**WEIGHT: 10.0 kg  
22.0 lbs**

**FINISH: Self colour  
or Red Oxide Primer**